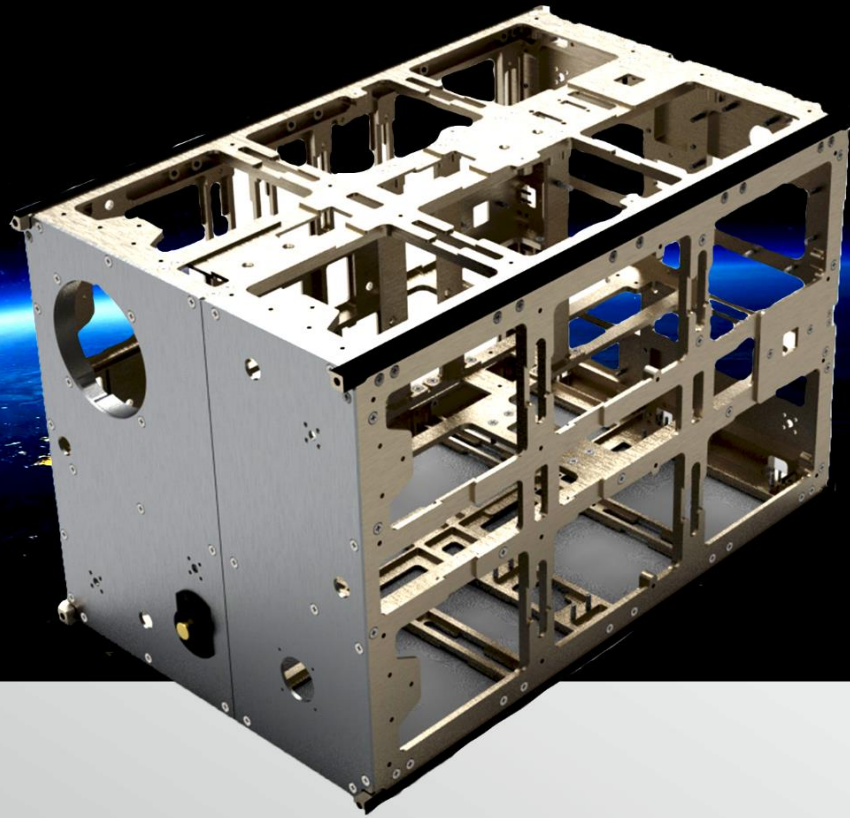


FLEXIBLE  
RELIABLE  
MODULAR



## Description

---

This 12U structure is a kind of standard CubeSat structure based on modular concept design. It uses the standard U (the envelope of 1U is 10cm x 10cm x 10cm) as the unit and can provide 1U~12U structure at present. It could install various types of CubeSat subsystems and has strong adaptability to the platform

## Highlight

---

- . Stainless Steel Threaded inserts
- . Modular Design
- . Custom internal and external mounting interface
- . The Structure Rails are hard anodized black
- . Possibility of coating in other colors
- . Design Customization on request



# TECHNICAL SPECIFICATION

General Characteristics	
Dimensions	250x250x400 mm
Material	Aluminum 7075
Primary Structure Mass	2900 gr
Secondary Structure	Custom Design
Kill Switch	1 – custom Design
Stack mounting	Longitudinal (Z), Lateral (X, Y)
Stack Height/Length	Custom
Stack Layout	PC104

## Model

